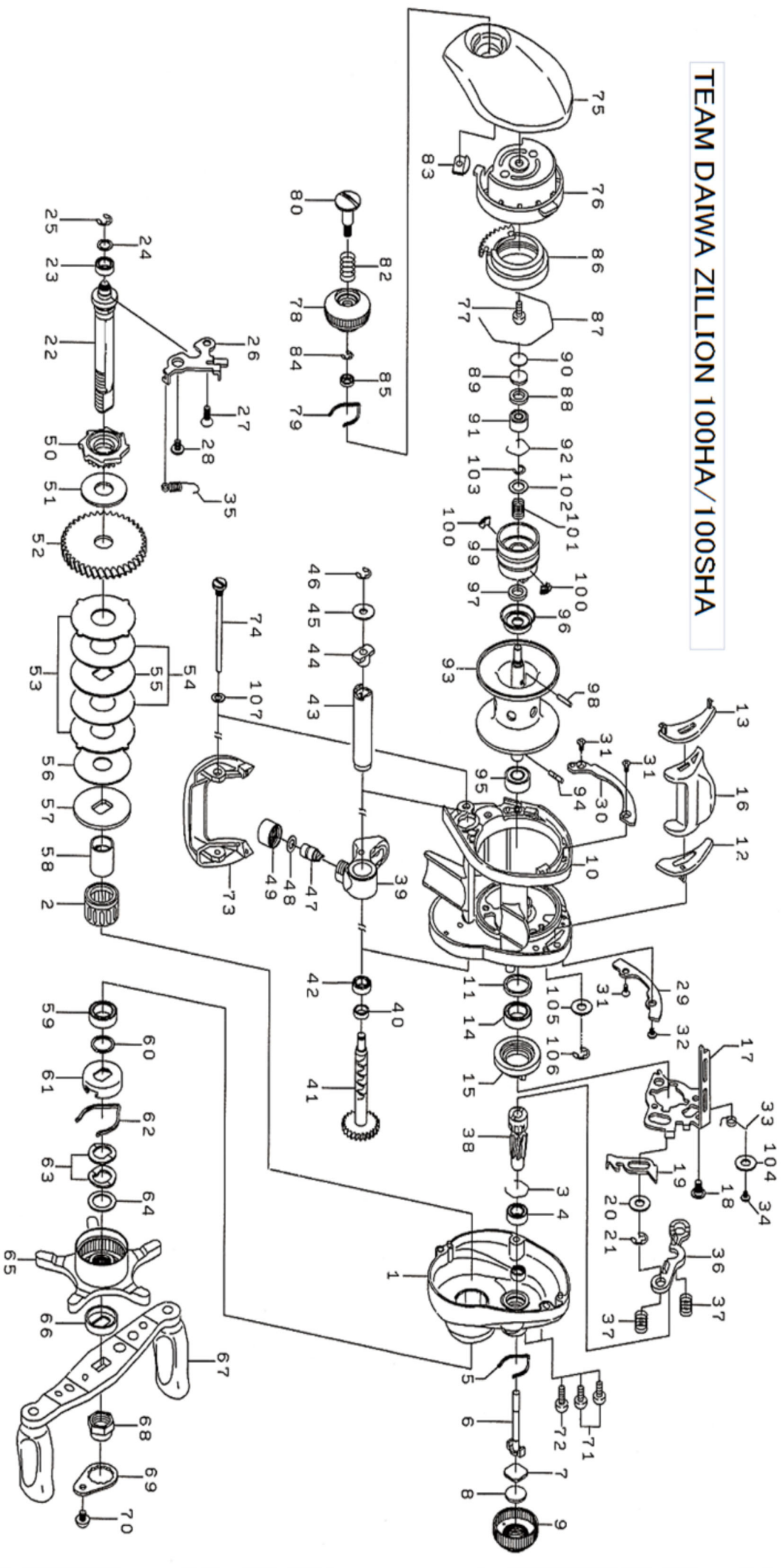




# ZILLION 100SHA

Please quote by part number, not key number when ordering  
spares@daiwaaustralia.com.au PH: 02 8644 8644

## TEAM DAIWA ZILLION 100HA/100SHA





Please quote by part number, not key number when ordering  
spares@daiwaaustralia.com.au PH: 02 8644 8644

## ZILLION 100SHA

| Key No. | Part Number | Description                    | Key No. | Part Number | Description                |
|---------|-------------|--------------------------------|---------|-------------|----------------------------|
| 1       | 6G884601    | Right side plate               | 49      | 63424807    | Pawl cap                   |
| 2       | 6G819801    | Roller clutch                  | 50      | 6G790901    | Clutch wheel               |
| 3       | 6B421601    | Bearing retainer (A)           | 51      | 6G863501    | Drive shaft washer         |
| 4       | 6G538001    | Ball bearing (A)               | 52      | 6G796401    | Drive gear                 |
| 5       | 6G894401    | Click leaf spring (A)          | 53      | 6G791301    | Eared washer               |
| 6       | 6F744101    | Pinion shaft                   | 54      | 6G791401    | Drag washer (A)            |
| 7       | 6B175401    | Spacer (A)                     | 55      | 6F904902    | Key washer (A)             |
| 8       | 6B175503    | Spacer (B)                     | 56      | 6G711101    | Drag washer (B)            |
| 9       | 6F833907    | Cast control cap               | 57      | 6G358501    | Key washer (B)             |
| 10      | 6G789002    | Frame assembly                 | 58      | 6G011401    | Gear shaft collar          |
| 11      | 6F834701    | Collar                         | 59      | 6B861703    | Ball bearing (D)           |
| 12      | 6G009302    | Spacer (C)                     | 60      | 6B553801    | Bearing washer             |
| 13      | 6G009402    | Spacer (D)                     | 61      | 6F028201    | Click leaf spring holder   |
| 14      | 6G431002    | Ball bearing (B)               | 62      | 6F032401    | Click leaf spring (B)      |
| 15      | 6F793501    | Clutch cam                     | 63      | 61508901    | Drag spring washer         |
| 16      | 6G009501    | Clutch lever                   | 64      | 63737810    | Spacing sleeve             |
| 17      | 6G790001    | Clutch cam plate               | 65      | 6G792503    | Star drag                  |
| 18      | 6G009701    | Clutch cam screw               | 66      | 6F850402    | Handle collar              |
| 19      | 6G790101    | Clutch trip plate              | 67      | 6G884501    | Handle assembly            |
| 20      | 63716906    | Washer (A)                     | 68      | 6G793301    | Handle nut                 |
| 21      | 63201402    | Retainer (A)                   | 69      | 60403209    | Handle nut plate           |
| 22      | 6G790201    | Drive shaft                    | 70      | 63538301    | Handle nut plate screw     |
| 23      | 6G466206    | BALL BEARING                   | 71      | 6G040805    | Right side plate screw (A) |
| 24      | 6G755201    | Washer (B)                     | 72      | 6G040801    | Right side plate screw (B) |
| 25      | 63205901    | Retainer (B)                   | 73      | 6G011601    | Front plate                |
| 26      | 6G790301    | Drive shaft retainer           | 74      | 6G011702    | Stabilizer bar             |
| 27      | 6E134503    | Drive shaft retainer screw (A) | 75      | 6G036814    | Left side plate            |
| 28      | 6G850401    | Drive shaft retainer screw (B) | 76      | 6G011902    | Left set plate             |
| 29      | 6G794102    | Plate (A)                      | 77      | 63510906    | Left set plate screw       |
| 30      | 6G795702    | Plate (B)                      | 78      | 6F577802    | Brake adjusting knob       |
| 31      | 6G318503    | Screw (A)                      | 79      | 6F051701    | Brake click spring         |
| 32      | 6G611501    | Screw (B)                      | 80      | 6F577901    | Set plate screw            |
| 33      | 6G790401    | Clutch cam spring              | 82      | 6E167101    | Set plate spring           |
| 34      | 6F505701    | Screw (C)                      | 83      | 6F613401    | Brake dial retainer (A)    |
| 35      | 6G790501    | Clutch trip plate spring       | 84      | 6B339801    | Brake dial retainer (B)    |
| 36      | 6F794801    | Yoke                           | 85      | 6F637701    | Brake dial collar          |
| 37      | 6G850301    | Yoke spring                    | 86      | 6F717702    | Magnet holder              |
| 38      | 6G884701    | Pinion gear                    | 87      | 6B543201    | Magnet holder retainer     |
| 39      | 6G410301    | Line guide                     | 88      | 6F574303    | Spacer (E)                 |
| 40      | 6G010701    | Worm shaft holder (A)          | 89      | 63757411    | Spacer (F)                 |
| 41      | 6G790701    | Worm shaft assembly            | 90      | 63757404    | Spacer (G)                 |
| 42      | 6F648301    | Worm shaft holder (B)          | 91      | 6G498508    | Ball bearing (E)           |
| 43      | 6F836502    | Level wind guard               | 92      | 6E219701    | Bearing retainer (B)       |
| 44      | 6B715601    | Worm shaft holder (C)          | 93~103  | 6Z017901    | Spool assembly             |
| 45      | 6F655501    | Worm shaft washer              | 104     | 6F440201    | Washer (C)                 |
| 46      | 63205901    | Worm shaft retainer            | 105     | 6G850701    | Washer (D)                 |
| 47      | 61214212    | Line guide pawl                | 106     | 63205901    | Retainer (C)               |
| 48      | 63731303    | Line guide washer              | 107     | 6G684801    | Washer (E)                 |